



Owner

Chicago Department of Aviation

Client

O'Hare Modernization Program

Prime

MWH-DELTA

Schedule

Aug. 2004-Mar. 2008

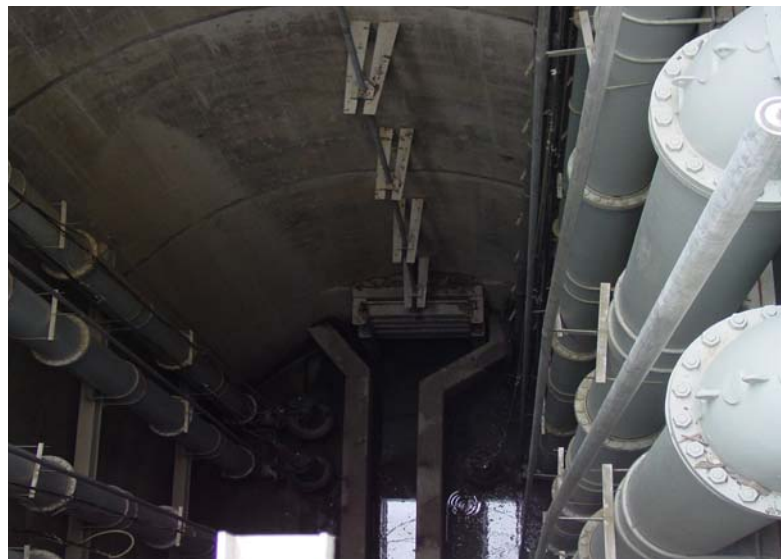
Total Project Costs

\$ 11 Million



O'Hare Modernization Program Central Basin Pump Station

Delta provided civil, structural, mechanical, plumbing, electrical, and instrumentation/controls design including architectural services for this project. This involved preparing complete contract documents including plans, specifications, design calculations, quantities and cost estimates for the pump station and two oil-water separators. Complete electrical power and lighting, conduits and wiring schedules, lighting fixtures and panel schedules with applicable details were designed and shown on contract documents. The design of the underground Central Basin Pumping Station had inside diameter of 26 feet and a depth of 61.5 feet. The pump station was designed with baffle walls and included a valve vault accessible from the top including an electrical room. The complete system is comprised of two 110-HP, 460V three-phase storm-water pumping sets with variable frequency drive. Pumping capacity is 15 CFS (6736 gpm). Power distribution is via Motor Control Center with PLC Controls. A 42-inch diameter ductile iron pipe was designed for force main to discharge into existing force main. Two oil-water separators with 50,000-gallon capacity with man-ways for access were also designed.



Delta Engineering Group, LLC
111 W. Jackson Blvd.
Chicago, IL 60604
312-377-7700

www.deg-america.com